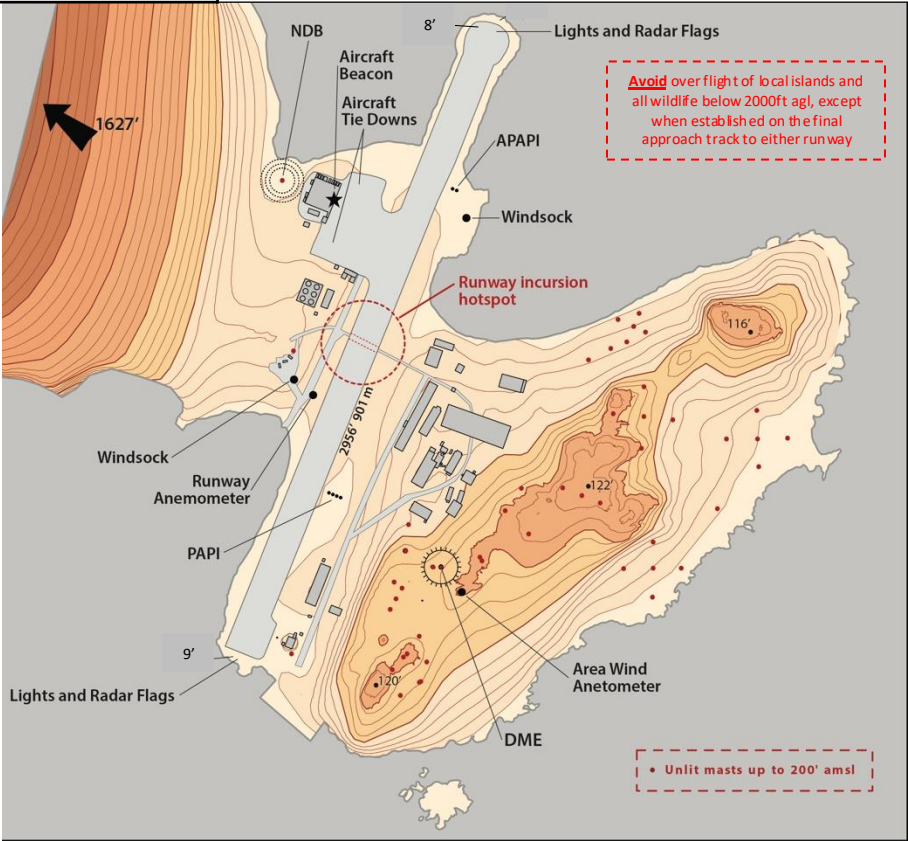


<div>MSA30Nm</div> <div><div>11000</div><div>NDB(L) ROT</div></div>	Rothera Radio			Apt Elev 12'	ROTHERA – EGAR Airfield layout
	118.1	5080 7775	NDB 310 (D) 117.25	All Bearings & Tracks are Magnetic	
	Aerodrome Reference Point: S67 34.06 W068 07.63 Rothera Radio: VHF 118.1 HF 5080, 7775, 9106 Phone: +44 1223 221670 Iridium+881 621 463 301 Operating hours: 1100z to 0000z Mon-Sat Oct-Feb. Other times by arrangement, all operations by strict prior permission. For current Rothera chart status and Visiting aircraft information consult <a href="https://www.bas.ac.uk/polar-operations/polar-science-facilities/aircraft/pilots/">https://www.bas.ac.uk/polar-operations/polar-science-facilities/aircraft/pilots/</a>				



RWY 18	HIREL, REIL, APAPI (4 deg)	IDA 2956 feet TORA 2956 feet	Elevation 8'	Gravel
RWY 36	HIREL, REIL, PAPI (3 deg)	IDA 2956 feet TORA 2956 feet	Elevation 9'	Gravel
RWY 18/36 MIRL edge lighting is available - requires 1 Hour notice to deploy				
<b>Co-ordinates:</b>				
Rwy 18 Threshold <b>S67 33.83 W068 07.40</b>				
Rwy 36 Threshold <b>S67 34.27 W068 07.85</b>				
<b>Takeoff</b>				
<b>Rwy 36: 1100 feet Cloud Ceiling and Visibility 3000m</b>				
<b>Rwy 18: 1500 feet Cloud Ceiling and Visibility 5000m</b>				

MSA 30Nm <div><div>11000</div><div>NDB(L) ROT</div></div>	Rothera Radio		Apt Elev 12'	ROTHERA – EGAR Warnings, notes and Special Procedures
	118.1	5080 7775	NDB 310 (D) 117.25	
Aerodrome Reference Point: S67 34.06 W068 07.63 Rothera Radio: VHF 118.1 HF 5080, 7775, 9106 Phone: +44 1223 221670 Iridium +881 621 463 301  For current Rothera chart status and Visiting aircraft information consult <a href="https://www.bas.ac.uk/polar-operations/polar-science-facilities/aircraft/pilots/">https://www.bas.ac.uk/polar-operations/polar-science-facilities/aircraft/pilots/</a>				
<b>Warnings:</b> 1. Weather balloons, rockets and RPAS activity; contact Rothera Operations and consult the latest NOTAMs published on the AIS NOTAM system. 2. Rothera runway is <b>NOT</b> available during BAS DASH 7 Point of Safe Return (PSR) Operations. Aircraft captains must contact Rothera Operations by phone before departure on the day of intended flight for details. 3. Possible icebergs up to 300 feet on the approach to both runways. 4. Severe turbulence and windshear on short finals to RWY36 & 18 associated with easterly winds greater than 10 kts. 5. Bird hazard in the vicinity of Rothera airfield November to April. 6. Occasional ships moored at the wharf to the East of RWY36 threshold. Ships moored at the Rothera wharf may necessitate runway closure, contact Rothera Operations. 7. Steeply rising ground to the West, circuits to the East only, circuit height 1200 feet. 8. Multiple aerial arrays to the east of the runway up to 200 feet amsl. 9. RWY18 4 deg APAPI approach angle does not assure terrain separation for approaching aircraft when West of Runway centreline.				
<b>Notes:</b> 1. Fuel: JET A1 available by prior permission only. 2. Runway marked with 205 lt drums and end flags. 3. Snow banks likely up to 3m September to January contact Rothera Operations. 4. Portable runway lights (MIRL) require 60 minutes notice to deploy. 5. Inbound aircraft to call at 4nm final.				
<b>Special Operational Procedures:</b> <u>BAS DASH 7 Point of Safe Return (PSR) Procedures.</u> (NOT applicable to Rothera Skiway)				
BAS procedures require a sterile runway at Rothera for all periods where the BAS DASH 7 has passed PSR until it has landed. Aircraft will NOT be allowed to take-off or land during this period. <u>It is mandatory for inbound visiting aircraft captains to contact Rothera Operations before take off.</u> It is the sole responsibility of the aircraft captain to establish the airfield status, gain final authorisation and ensure the flight is planned to avoid times where the airfield is unavailable. If a captain becomes aware the ETA may conflict with a planned DASH 7 PSR period, or other restriction, they must inform Rothera Ops as soon as possible. Failure to adhere to these requirements may result in refusal to use the airfield and the aircraft will be directed to divert or return to the point of departure. <u>This requirement does NOT affect</u> aircraft able to use the skiway when conditions are suitable for its use.				
<b>Contact Information</b> Rothera Operations Voip +44-1223-221-670 Rothera Operations Voip Aircraft Safety Calls <u>ONLY</u> +881 677 135 966 Rothera Operations Iridium +881-621-463-301 <a href="mailto:rops@bas.ac.uk">rops@bas.ac.uk</a> Forecaster (12z to 21z) +44-1223-221-680 <a href="mailto:rforecaster@bas.ac.uk">rforecaster@bas.ac.uk</a> Field Ops Manager (FOM) +44-1223-221-673 <a href="mailto:rfom@bas.ac.uk">rfom@bas.ac.uk</a> Rothera Station Leader +44-1223-221-672 or +44-1223-221-674 <a href="mailto:rlc@bas.ac.uk">rlc@bas.ac.uk</a> Cambridge Ops Manager +44-1223-221-527 or +44-7872-176-162 <a href="mailto:chrdr@bas.ac.uk">chrdr@bas.ac.uk</a> <b>Emergency (out of hours only)</b> +44-1223-221-688 or +44-1223-221-696				
<b>BAS Web site (Air Unit home page)</b> For NOTAMs and Weather information: <a href="https://www.bas.ac.uk/polar-operations/polar-science-facilities/aircraft/pilots/">https://www.bas.ac.uk/polar-operations/polar-science-facilities/aircraft/pilots/</a>				

<div>MSA30Nm</div> <div><div>11000</div><div>NDB(L) ROT</div></div> <div>PROCEDURES NOT FLIGHT CHECKED</div>	Rothera Radio			Apt Elev 12' All Bearings & Tracks are Magnetic	ROTHERA – EGAR Approach & SID COORDINATES
	118.1	5080 7775	NDB 310 (D) 117.25		
	Aerodrome Reference Point: S67 34.06 W068 07.63 Rothera Radio: VHF 118.1 HF 5080, 7775, 9106 Phone: +44 1223 221670 Iridium+881 621 463 301  For current Rothera chart status and Visiting aircraft information consult <a href="https://www.bas.ac.uk/polar-operations/polar-science-facilities/aircraft/pilots/">https://www.bas.ac.uk/polar-operations/polar-science-facilities/aircraft/pilots/</a>				

RWY18 RNAV1 SID

ROT04 S67°37.98 W068°11.66  
ROT05 S67°39.32 W068°02.64  
R0210 S67°26.72 W067°50.58  
ROT26 S67°11.33 W067°36.20  
IPASS S66°58.59 W067°24.51  
G1 S66°00.00 W068°34.12  
6666 S66°00.00 W068°34.00

RWY36 RNAV1 SID

R0210 S67°26.72 W067°50.58  
ROT26 S67°11.33 W067°36.20  
IPASS S66°58.59 W067°24.51  
G1 S66°00.00 W068°34.12  
6666 S66°00.00 W068°34.00

RNAV RWY36

RIAF S67°51.07 W068°24.85  
RIF S67°46.40 W068°20.12  
RFAF S67°43.13 W068°16.80  
RMAPt S67°35.67 W068°09.26  
RMATF S67°37.45 W067°57.02  
REAST S67°48.18 W068°07.78  
R36T S67°34.27 W068°07.85

NDB/DME RWY36

R36T S67°34.27 W068°07.85

30Nm

**11000**

NDB(L) ROT

**PROCEDURE NOT  
FLIGHT CHECKED**

## Rothera Radio

118.1

5080  
7775

NDB 310  
(D) 117.25

**Apt Elev 12'**

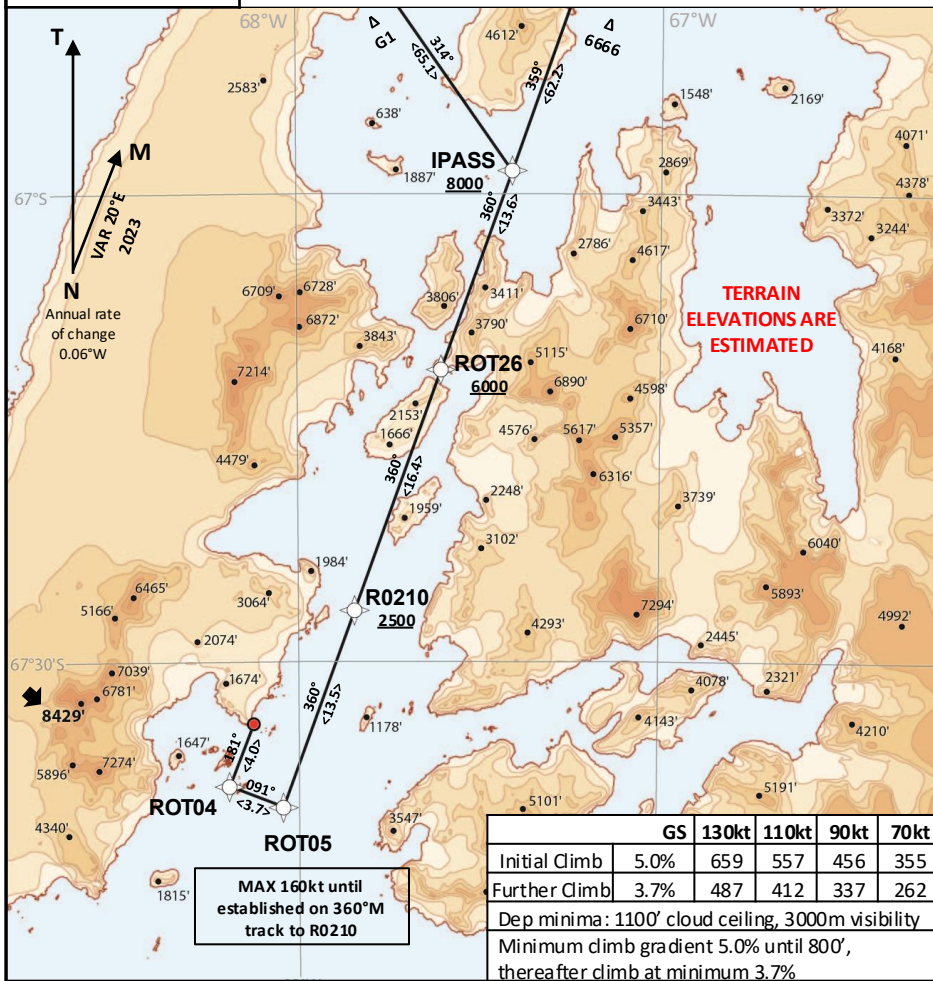
All Bearings  
& Tracks are  
Magnetic

**ROTHERA – EGAR**

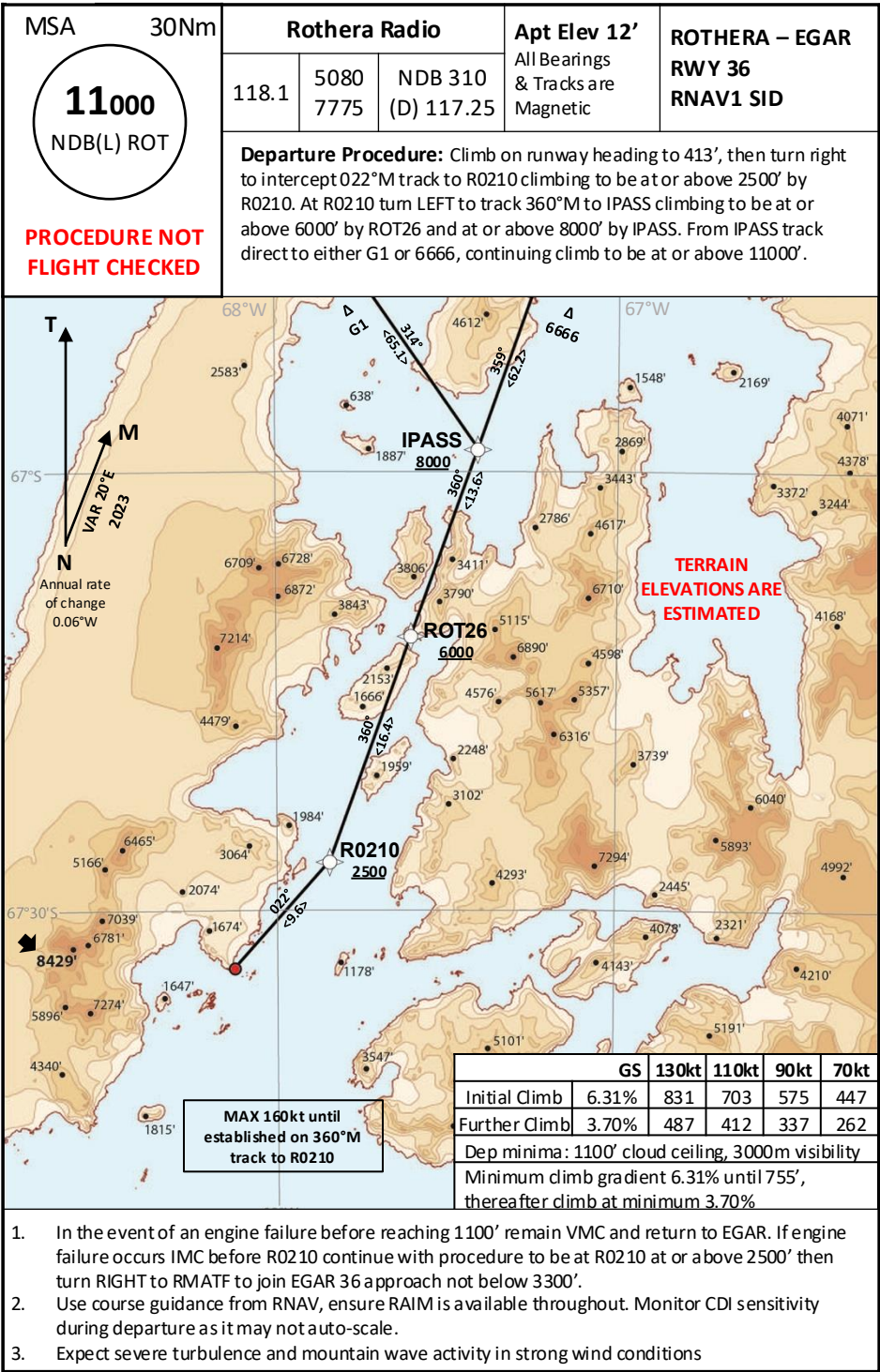
RWY 18

## RNAV1 SID

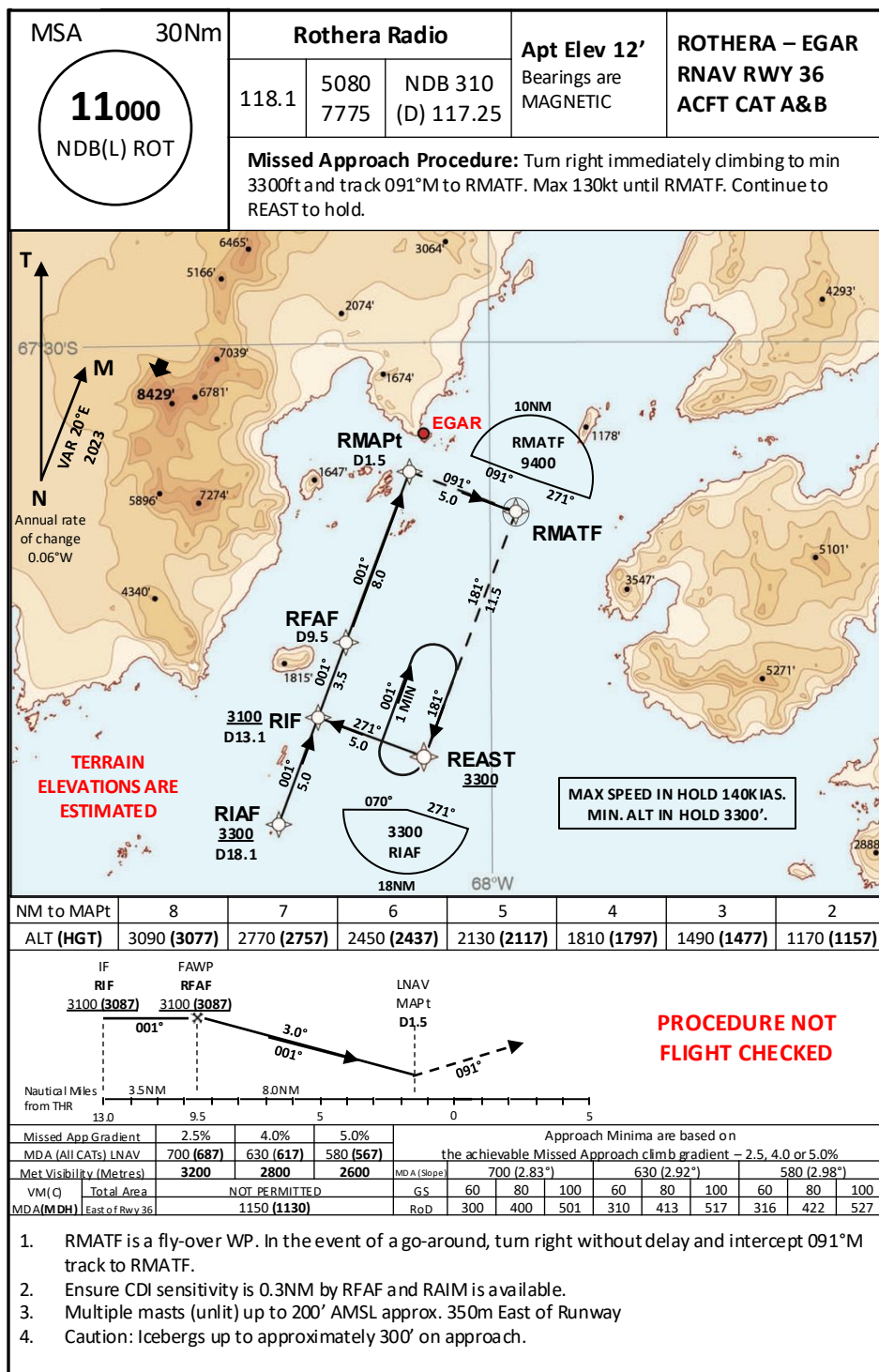
**Departure Procedure:** Climb on runway heading to 800' turn left at ROT04 and left at ROT05 to intercept 360°M track to R0210 climbing to be at or above 2500' by R0210. At R0210 continue to track 360°M to IPASS climbing to be at or above 6000' by ROT26 and at or above by 8000' by IPASS. From IPASS track direct to either G1 or 6666, continuing climb to be at or above 11000'.

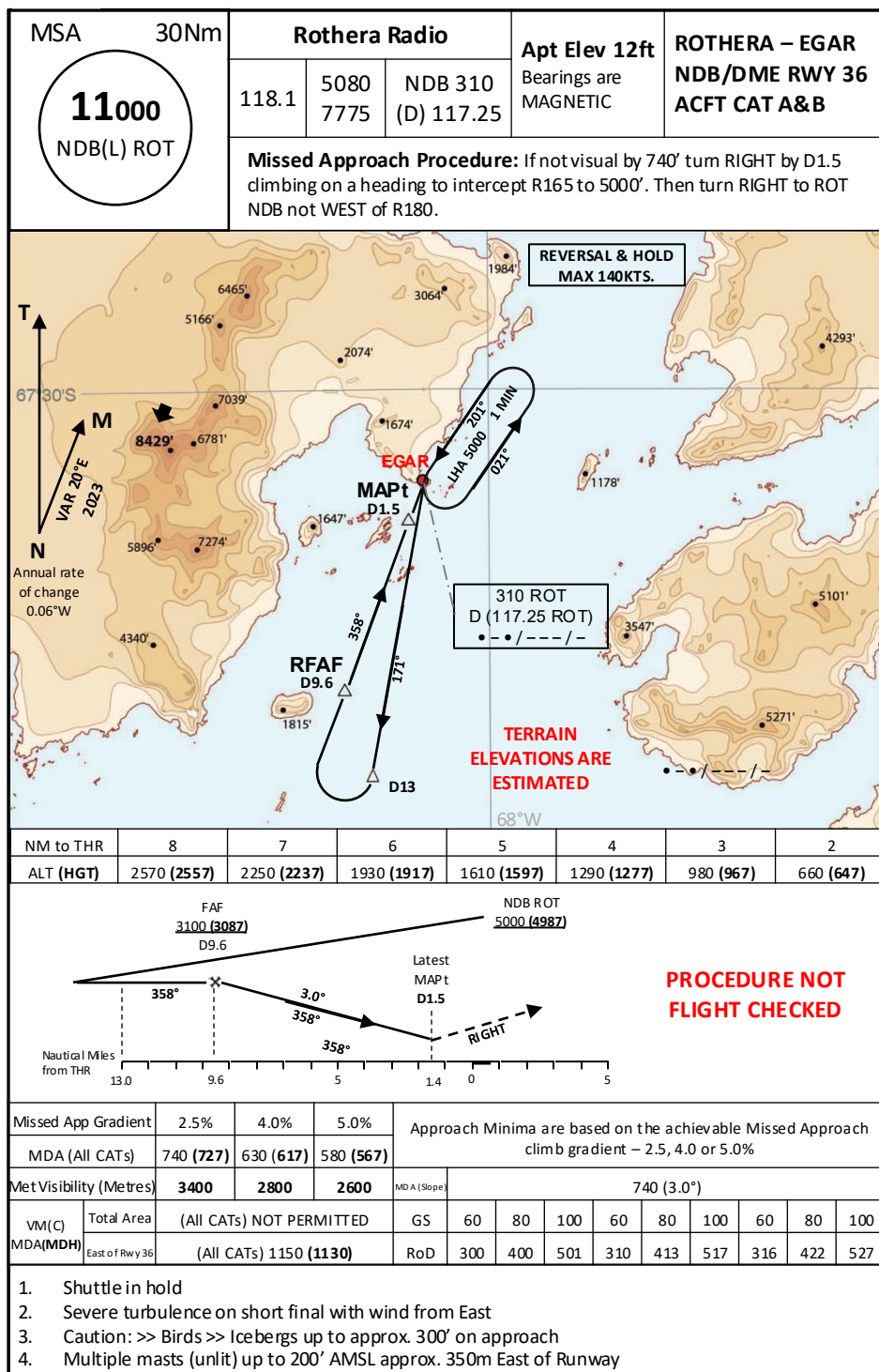


1. In the event of an engine failure before reaching 1100' remain VMC and return to EGAR. If engine failure occurs IMC before R0210 continue with procedure to be at R0210 or above 2500' then turn RIGHT to R0210 to join EGAR 36 approach not below 3300'.
2. Use course guidance from RNAV, ensure RAIM is available throughout. Monitor CDI sensitivity during departure as it may not auto-scale.
3. Expect severe turbulence and mountain wave activity in strong wind conditions









<div>MSA30Nm</div> <div><div>11000</div><div>NDB(L) ROT</div></div>	Rothera Radio			Skiway Elev approx. 825' All Bearings & Tracks are Magnetic	ROTHERA – EGAR Skiway 02/20
	118.1	5080 7775	NDB 310 (D) 117.25		
	Skiway Coordinates: <b>S67 31.9 W068 11.0</b> Rothera Radio: VHF 118.1 HF 5080, 7775, 9106 Phone: +44 1223 221670 Iridium +881 621 463 301  For current Rothera chart status and Visiting aircraft information consult <a href="https://www.bas.ac.uk/polar-operations/polar-science-facilities/aircraft/pilots/">https://www.bas.ac.uk/polar-operations/polar-science-facilities/aircraft/pilots/</a>				

- Warning:**
- Daily weather balloons, and/or RPAS activity; contact Rothera Operations and consult the latest BAS NOTAMS.
  - Severe turbulence** can be expected on the approach to skiway 02 and in all directions with winds greater than 15kts.
  - Approach to skiway 02 is over steeply rising ground.
  - Skiway marked with 205 lt drums, land to the south of the drum line.

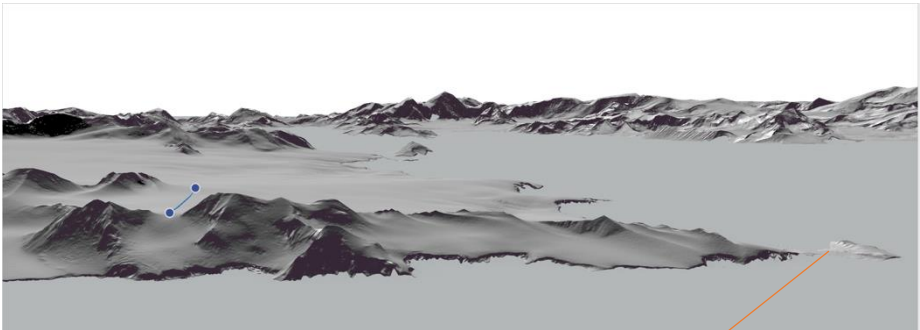
- Cautions:**

  - Steeply rising ground to the West and South of the skiway.
  - Unprepared skiway.
  - Birds
  - Skiway used for recreation. Possible foot/ski and skidoo activity.

**Notes:**

  - Fuel Jet A1 available by prior arrangement only.
  - All aircraft require Prior Permission.
  - Access to the skiway from Rothera Station may be restricted January to March due to snow conditions
  - New crevassing between Station and Skiway may restrict aircraft support and fuel provision

02 Threshold **Approximately S67 32.400 W068 11.954 Elev 825'**.  
20 Threshold **Approximately S67 31.354 W068 09.957 Elev 828'**.  
02 & 20 Takeoff/Landing distance approximately 8000 feet– Surface type: Snow.



Skiway looking North through Skiway Col

