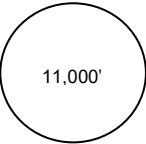
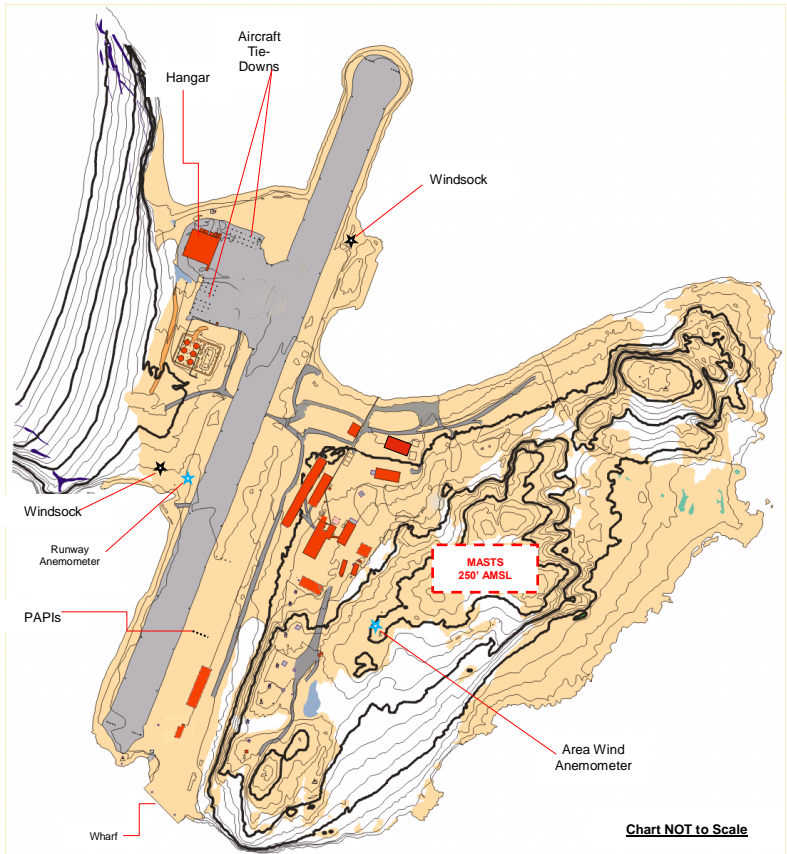


# EGAR Rothera (Antarctica)

# Runway 18/36 (Mag)

Apt Elev: 13' Apt Reference Point: **S67 34.0 W068 07.7**

Rothera Radio: VHF 118.10 HF 5080, 7775, 9106		
Phone +44 1223 221670 or 671 Iridium 881 631 831 227		
<b>All Procedures VFR Use Only Not Approved</b>	Operating Hours: 1100z to 0000z Mon-Sat Oct-Feb. Other times by arrangement all operations require prior permission	MSA 25 nm ROT
<b>See page 2 for Warnings, Notes and Special Procedures. Variation 20°E (2018)</b>		
<b>Circuits: Left hand runway 18 / Right hand runway 36 / Alt 1200'</b>		



RWY 18	MIRL	LDA 2875 feet TORA 2875 feet	Elevation 13'	Gravel
RWY 36	REIL, PAPI, MIRL	LDA 2875 feet TORA 2875 feet	Elevation 13'	Gravel
<b>Co-ordinates:</b>				
Rwy 18 Threshold <b>S67 33.83 W068 07.40</b> ,				
Rwy 36 Threshold <b>S67 34.27 W068 07.85</b>				
<b>Takeoff</b>				
<b>Rwy 36: 1100 feet Cloud Ceiling and Visibility 3000m</b>				
<b>Rwy 18: 1500 feet Cloud Ceiling and Visibility 5000m</b>				

BAS is not responsible for and claims no right to the contents or accuracy of any of the information or procedures displayed on this chart

**Warnings:**

1. Weather balloons, rockets and UAV activity; contact Rothera Comms and consult the latest BAS NOTAMS.
2. Rothera runway **NOT** available during BAS DASH 7 Point of Safe Return (PSR & PNR) Operations contact Rothera comms before departure on the day of intended flight for details.
3. Possible icebergs maximum 300 feet on the approach to both runways.
4. Severe turbulence and windshear on short finals to runway 36 & 18 associated with easterly winds greater than 10 kts.
5. Bird hazard in the vicinity of Rothera airfield November to April.
6. Occasional ships moored at the wharf to the East of Rwy 36 threshold, contact Rothera Comms.
7. Steeply rising ground to the West, circuits to the East only, circuit height 1200 feet.
8. Multiple aerial arrays to the east of the runway up to 250 feet amsl.

**Notes:**

1. Fuel: JET A1 available by prior permission only.
2. Runway marked with 205 lt drums and end flags.
3. Snow banks likely maximum 3m September to January contact Rothera comm.
4. Portable runway lights (MIRL) require 30 minutes notice to deploy.
5. Inbound aircraft to call at 5nm final.
6. For current chart status consult:

[http://www.antarctica.ac.uk/staff/pilots/approach\\_plates.php](http://www.antarctica.ac.uk/staff/pilots/approach_plates.php)

**Special Operational Procedures:**

BAS DASH 7 Point of Safe Return (PSR) Procedures. (NOT applicable to Rothera Skiway)

BAS procedures require a sterile runway and airspace at Rothera for all periods where the BAS DASH 7 has passed PSR until it has landed. Aircraft will NOT be allowed to takeoff, land, hold in the overhead or the vicinity of the airfield during this period. Visiting aircraft captains MUST contact Rothera operations on the day of their intended departure for final permission and to ensure their arrival does not conflict with any DASH 7 PSR periods. Failure to adhere to this requirement will result in refusal to use the airfield and the aircraft will be directed to divert or return to the point of departure. **This requirement does NOT affect aircraft able to use the skiway when conditions are suitable for its use.**

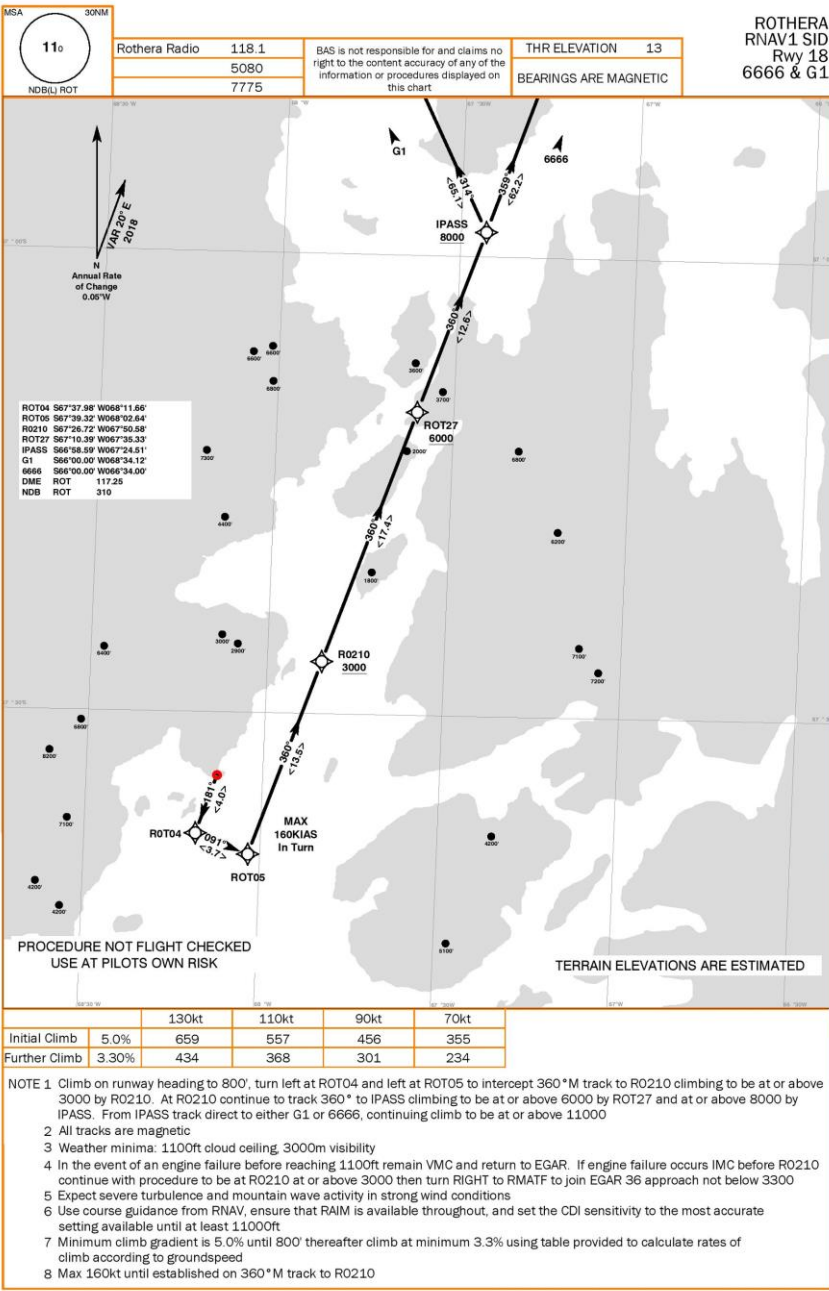
Contact Information

Rothera Operations Voip +44 1223 221670 or +44 1223 221671  
 Rothera Operations Iridium + 881631 831 219 [rops@bas.ac.uk](mailto:rops@bas.ac.uk)  
 Forecaster (12z to 21z) +44 1223 221680 [forecaster@bas.ac.uk](mailto:forecaster@bas.ac.uk)  
 Field Ops Manager (FOM) +44 1223 221673 [fom@bas.ac.uk](mailto:fom@bas.ac.uk)  
 R Base Commander +44 1223 221 672 or 674 [rbc@bas.ac.uk](mailto:rbc@bas.ac.uk)  
 Cambridge Ops Manager +44 1223 221637 [medi@bas.ac.uk](mailto:medi@bas.ac.uk)  
**Emergency (out of hours only) +44 1223 221688 or 221696**

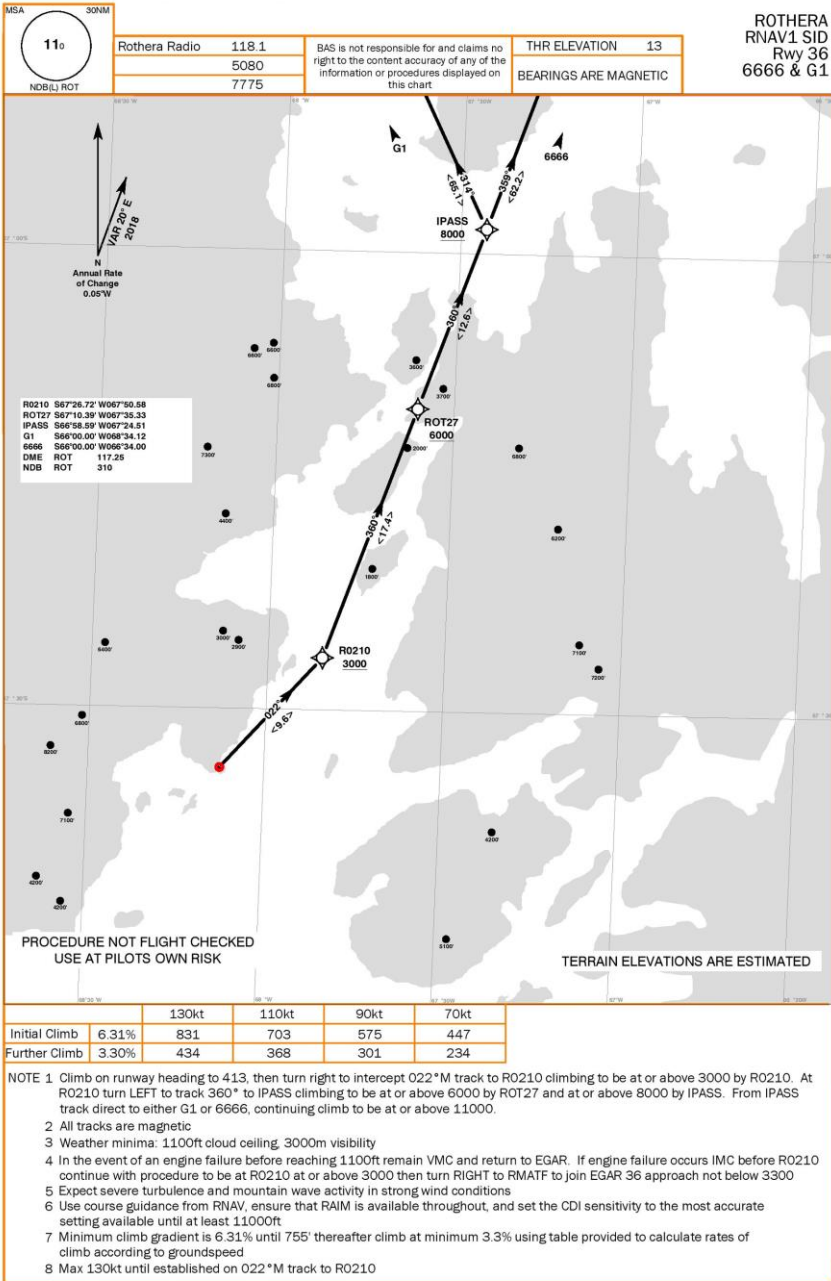
**BAS Web site (Air Unit home page)** For NOTAMs and Weather information:

<https://www.bas.ac.uk/polar-operations/sites-and-facilities/aircraft/pilots>

STANDARD DEPARTURE CHART - NOT APPROVED



## STANDARD DEPARTURE CHART - NOT APPROVED



MSA 30NM

110

NOB(L) ROT

INSTRUMENT APPROACH CHART - NOT APPROVED

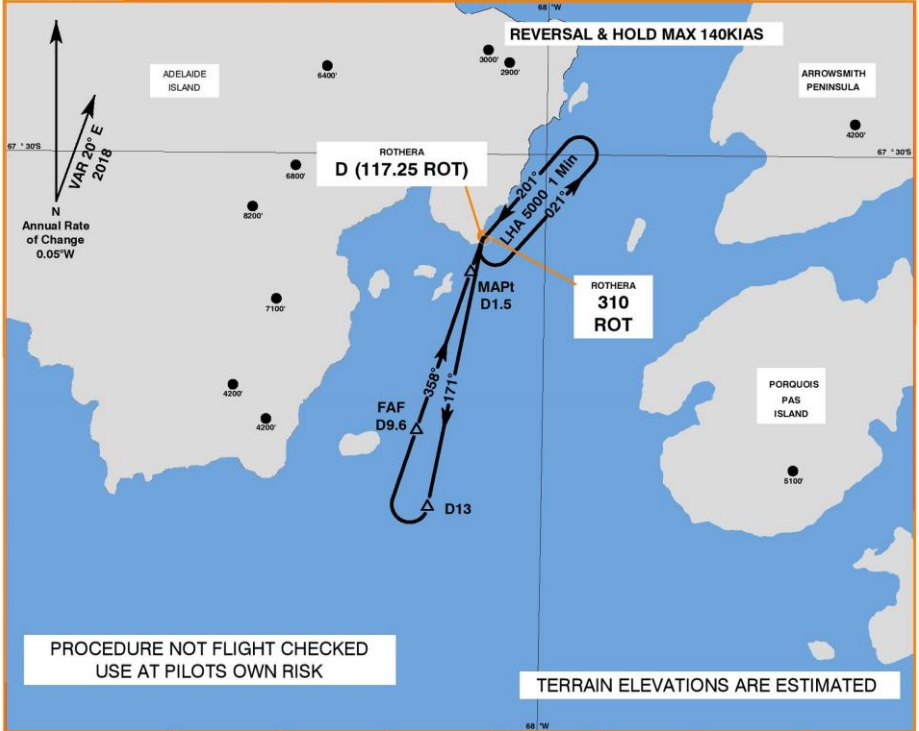
Rothera Radio	118.1	BAS is not responsible for and claims no right to the content accuracy of any of the information or procedures displayed on this chart	THR ELEVATION	13
	5080		BEARINGS ARE MAGNETIC	
	7775			

ROTHERA ANTARCTICA

NDB DME

RWY 36

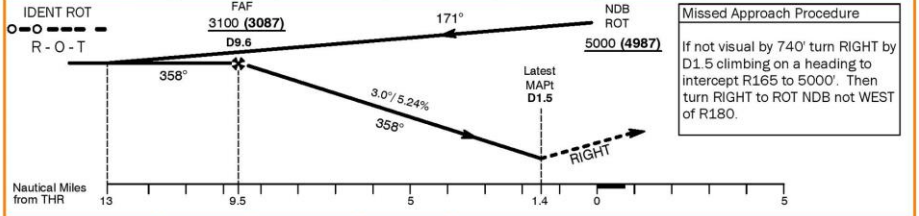
CAT A & B



PROCEDURE NOT FLIGHT CHECKED  
USE AT PILOTS OWN RISK

TERRAIN ELEVATIONS ARE ESTIMATED

NM to THR	8	7	6	5	4	3	2
ALT (HGT)	2570(2557)	2250(2237)	1930(1917)	1610(1597)	1290(1277)	980(967)	660(647)



Missed App Gradient	2.5%	4.0%	5.0%	Minima are dependent on the climb gradient which can be achieved on the Missed Approach									
MDA (All CATs)	740(727)	630(617)	580(567)	740 (3.0° 5.24%)									
Met Visibility (Meters)	3400	2800	2600	MDA (Slope)	70	80	90	100	110	120	140	160	180
				RoD	372	425	478	531	584	637	743	849	955
				VM(C)MDA	Total Area (All CATs) NOT PERMITTED								
				(MDH AAL)	East of Rwy 36 (All CATs) 1150(1130)								

- NOTE 1 Caution: Birds  
 2 Shuttle in Hold  
 3 Rwy 36 Thrhold S67 34.27 W068 07.85 Var 20° E  
 4 Severe turbulence on short final with wind from East  
 5 Procedure not approved - not flight checked. Operators fly this procedure at their own risk  
 6 Multiple Masts (Unlit) up to 250ft AMSL approx 350m East of Runway  
 7 Caution: Icebergs up to approximately 300ft on approach

INSTRUMENT APPROACH CHART - NOT APPROVED

MSA 30NM

110

NDB(L) ROT

Rothera Radio 118.1

5080

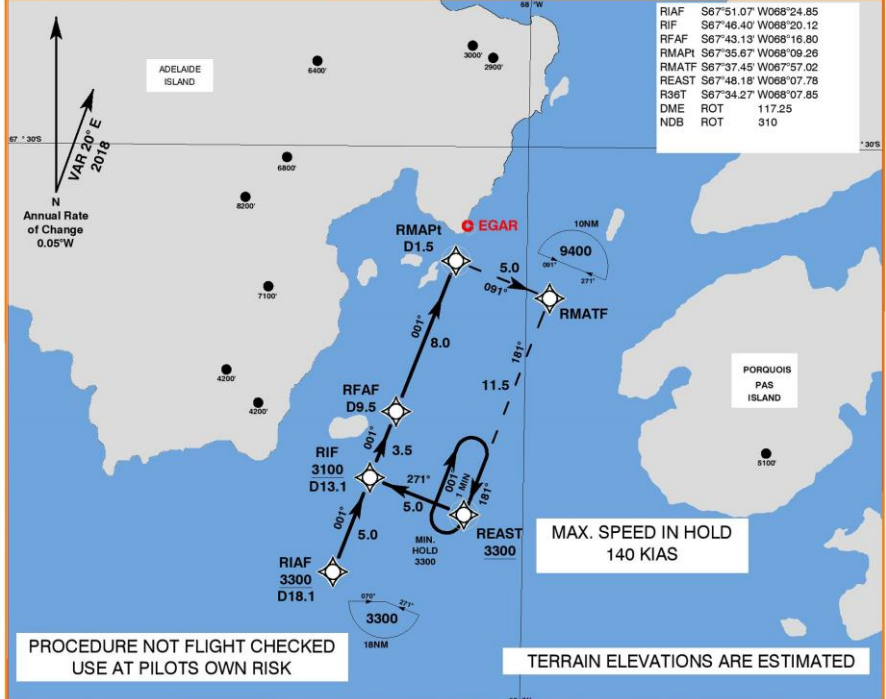
7775

BAS is not responsible for and claims no right to the content accuracy of any of the information or procedures displayed on this chart.

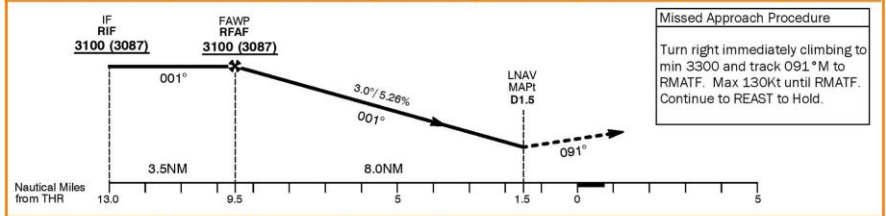
THR ELEVATION 13

BEARINGS ARE MAGNETIC

ROTHERA RNAV (GNSS) RWY 36 (ACFT CAT A&B)



NM to MAPt	8	7	6	5	4	3	2
ALT (HGT)	3090(3077)	2770(2757)	2450(2437)	2130(2117)	1810(1797)	1490(1477)	1170(1157)



Missed App Gradient	2.5%	4.0%	5.0%	Minima are dependent on the climb gradient which can be achieved on the Missed Approach			
MDA (All CATs) LNAV	700(687)	630(617)	580(567)	MDA (Slope)	700 (2.83°)	630 (2.92°)	580 (2.98°)
Met Visibility (Metres)	3200	2800	2600	g/s	60	80	100
VM(C)MDA Total Area	NOT PERMITTED			RoD	300	400	501
(MDH AAL) East of Rwy 36	1150(1130)				310	413	517
					316	422	527

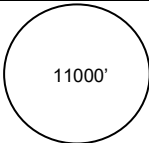
- NOTE 1 TAAs: South (RIAF) join from 271°M to 070°M within 18NM; North (RMATF) join from 091°M to 271°M within 10NM
- 2 RMATF is a fly-over WP. In the event of a go-around, turn right without delay and intercept 091°M track to RMATF
- 3 Ensure CDI sensitivity is 0.3NM by RFAF and RAIM is available
- 4 Procedure not approved - not flight checked. Operators fly this procedure at their own risk
- 5 Nominal final gradient is 5.26%. See RoD (fpm) vs g/s (kt) for RFAF to RMAPt gradients appropriate to MDA
- 6 Multiple Masts (Unlit) up to 250ft AMSL approx 350m East of Runway
- 7 Caution: Icebergs up to approximately 300ft on approach

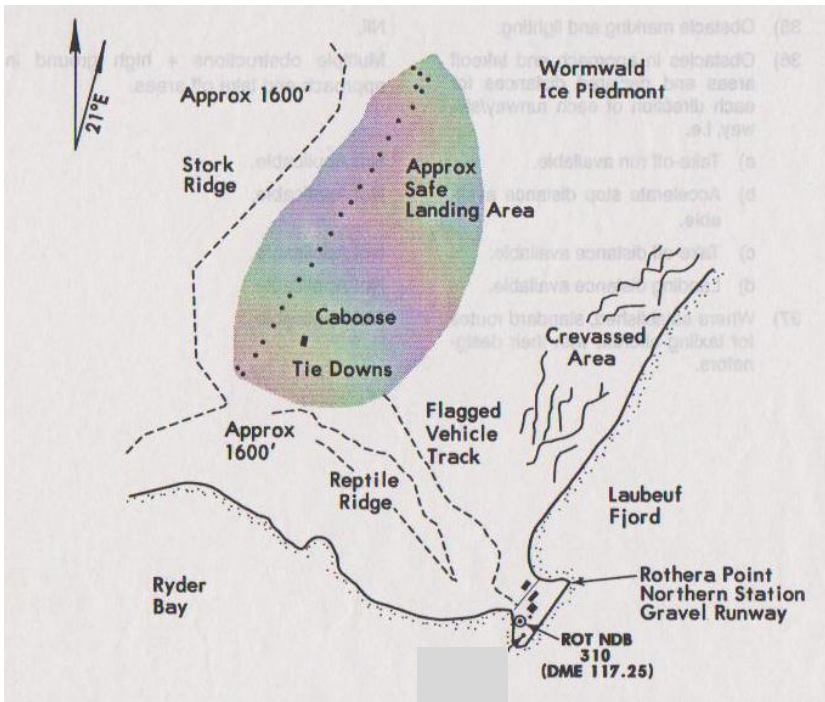
# EGAR Rothera (Antarctica)

# Skiway 02/20 Mag

Skiway Elev: **Approx 825'**

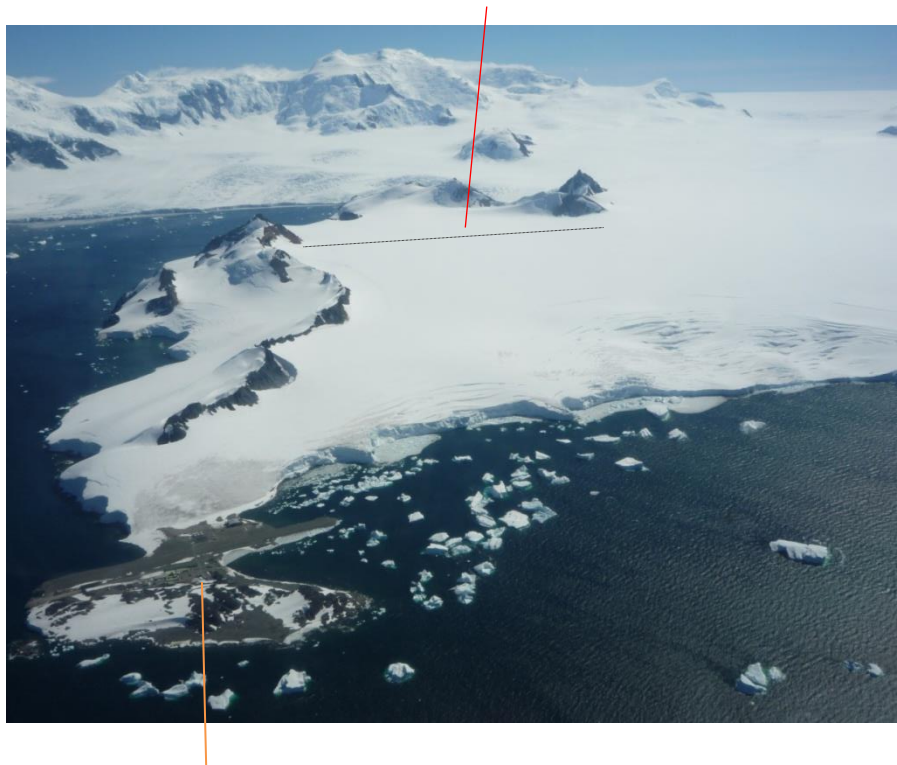
Skiway Position: **S67 31.9 W068 11.0**

Comms: VHF 118.1 HF 5080, 7775, 9106		 <p>11000'</p> <p>MSA 30 nm EGAR</p> <p>Variation 21°E (1980)</p>
Phone: +44 1223 221670 Iridium 881 631 831 227		
<b>VFR Use Only</b>	<b>Not Approved</b>	
Operating hours: On request.		
<b>Warning:</b> <ol style="list-style-type: none"> <li>Daily weather balloons, and/or UAV activity; contact Rothera Comms and consult the latest BAS NOTAMS.</li> <li><b>Severe turbulence</b> can be expected on the approach to skiway 02 and in all direction with winds greater than 15kts.</li> <li>Approach to skiway 02 is over steeply rising ground.</li> <li>Skiway marked with 205 lt drums, land to the south of the drum line.</li> </ol>		
<b>Cautions:</b> <ol style="list-style-type: none"> <li>Steeply rising ground to the west and South of the skiway.</li> <li>Unprepared skiway.</li> <li>Birds.</li> </ol>		<b>Notes:</b> <ol style="list-style-type: none"> <li>Fuel Jet A1 available by prior arrangement only.</li> <li>All aircraft require Prior Permission.</li> <li>Access to the skiway from Rothera Base may be restricted January to March due to snow conditions.</li> </ol>
<p><b>02</b> Threshold Approximately S67 32.400 W068 11.954 Elev 825'.</p> <p><b>20</b> Threshold Approximately S67 31.354 W068 09.957 Elev 828'.</p> <p><b>02 &amp; 20</b> Takeoff/Landing distance approximately 8000 feet– Surface type: Snow.</p>		



BAS is not responsible for and claims no right to the contents or accuracy of any of the information or procedures displayed on this chart

# Skiway Drum Line



# Rothera Runway & Base

