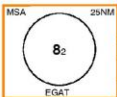


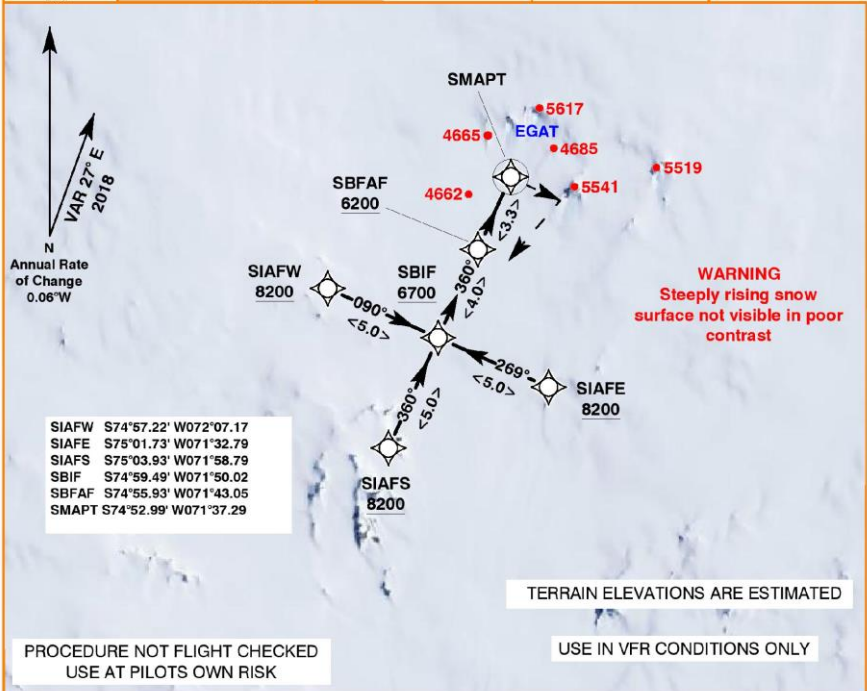
# EGAT Sky Blu Ice Runway (Antarctica)

# 36 (Mag) RNAV (GNSS)

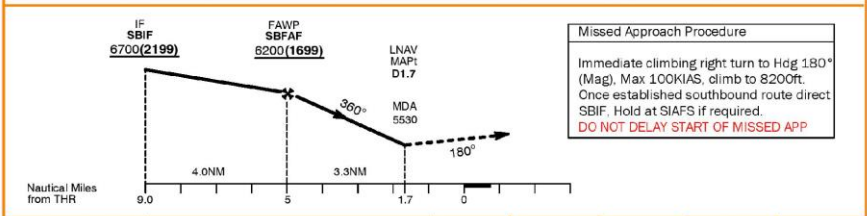


INSTRUMENT APPROACH CHART - NOT APPROVED		SKY BLU ICE RUNWAY ANTARCTICA	
Comms	118.1	THR ELEVATION	4501
	5080	RWY 36 RNAV (GNSS) (ACFT CAT A&B)	
	7775	BEARINGS ARE MAGNETIC	

BAS is not responsible for and claims no right to the content accuracy of any of the information or procedures displayed on this chart



Thresholds:	SB36T S74°51.478' W071°34.360' Elev. 4501'	SB18T S74°50.992' W071°33.306' Elev. 4549'
-------------	--	--



**Missed Approach Procedure**

Immediate climbing right turn to Hdg 180° (Mag). Max 100KIAS, climb to 8200ft. Once established southbound route direct SBIF. Hold at SIAFS if required.  
**DO NOT DELAY START OF MISSED APP.**

Missed App Gradient	2.5%	NM From Thr	4NM	3NM	2NM	
MDA (All CATs)	LNNAV	5530 (1029)	ALT (HGT)	5870 (1369)	5540 (1039)	5200 (699)
VM(C)MDA	Total Area	CIRCLING PROHIBITED	For 3.13° descent from FAF to Thr Note: DO NOT PASS BELOW MDA UNLESS VISUAL			

- NOTE 1** To be used in conjunction with separately produced Sky Blu Notes Sheet (BAS)
- Blue Ice Runway slippery in all conditions
  - High ground to the North, Northeast and West of the Runway
  - Steeply rising snow to NE not visible in poor or moderate contrast
  - Severe windshear and turbulence can be expected in winds above 15Kts from the West, North and Northeast

# EGAT Sky Blu Ice Runway (Antarctica)

18/36 (Mag)

Runway Elev: Approx 4501'

Position: S74 51.48 W071 34.36

Operated by the British Antarctic Survey.

Prior permission required, 48 hours minimum (except SAR/Medevac).

Contact: [dwat@bas.ac.uk](mailto:dwat@bas.ac.uk) + 44 1223 221 596 or:

Rothera Operations [rops@bas.ac.uk](mailto:rops@bas.ac.uk) +44 1223 221 670 or 671

Iridium +881 631 831 219

For Sky Blu phone and email details contact R Ops

## Caution:

1. Runway can be difficult to see in poor contrast when approaching from the south.
2. For approach to runway 36 Mag ensure CDI sensitivity is set to 0.3nm by SBFAF and RAIM is available.
3. Circling approaches to runway 18 (Mag) are **NOT** possible and approaches to runway 18 Mag can only be made in conditions of good contrast and good horizontal definition. Approaches/landings to runway 18 Mag may only be conducted by pilots who are familiar with sky Blu and who have previous experience of Sky Blu runway.
4. The runway 36 Mag approach profiles have not been flight checked. They have been compiled from the best available data which is known to be inaccurate or incomplete, this include terrain elevations.
5. Runway 18/36 Mag is nominally 1000m long and 30m wide. However, Sky Blu has limited snow clearing facilities and the runway may be unusable for wheeled aircraft and/or have reduced width/distances. Snow banks can be expected up to 1.5m on both sides of the runway. Contact Rothera Operations for the latest runway conditions.
6. Snow/ice surface slopes down to the South of runway 36 threshold. Pilot must exercise caution in poor contrast when approaching runway 36.
7. **Warning** – Treat reported QNH with caution. Rwy 36 minima 5330 feet QNH however, do not descend below 1140 feet Radio Altitude.

## Notes:

1. Runway has lead in flags on the approach to runway 36.
2. Runway marked with flags on both sides.
3. Runway marked with orange bags, on request, in conditions of poor contrast when the base is occupied.
4. The base is not permanently manned contact Rothera Operations for latest information.
5. Fuel Jet A1: not normally available.
6. Weather information available from Rothera Operations only when Sky Blu is occupied.
7. Accommodation and facilities not normally available.
8. **Sky Blu Iridium +881 652-415-342**. Note, current at date of issue, subject to change, confirm with R Ops.
9. **Blind landing** site available at Ski Hi 5nm radius based on drum marker and small fuel cache in position S74°58.310 W70°46.270.
10. All aircraft landing and taking off from Sky Blu shall make blind calls on TIBA VHF 129.7.

